

TREES such as:



Engelmann Oak
Quercus engelmannii



Chinese Elm
Ulmus parvifolia



African Sumac
Rhus lancea

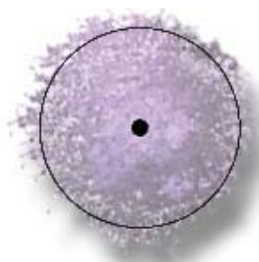


Chinese Flame Tree
Koelreuteria bipinnata



LANDSCAPE TREES SUCH AS:

- | | |
|----------------------------------|------------------------|
| Botanical Name | Common Name |
| <i>Arbutus marina</i> | Marina Strawberry Tree |
| <i>Chilopsis linearis</i> | Desert Willow |
| <i>Cinnamomum camphora</i> | Camphor Tree |
| <i>Olea europaea</i> 'Swan Hill' | Fruitless Olive |
| <i>Quercus engelmannii</i> | Engelman Oak |
| <i>Pinus eldarica</i> | Afghan Pine |
| <i>Prunus ilicifolia</i> | Hollyleaf Cherry |
| <i>Rhus lancea</i> | African Sumac |
| <i>Tipuana tipu</i> | Tipu |
| <i>Tristania conferta</i> | Brisbane Box |



PROMENADE TREES SUCH AS:

- | | |
|-------------------------------|--------------------|
| Botanical Name | Common Name |
| <i>Jacaranda mimosifolia</i> | Jacaranda |
| <i>Koelreuteria bipinnata</i> | Chinese Flame Tree |
| <i>Lagerstroemia indica</i> | Crape Myrtle |
| <i>Tabebuia impetiginosa</i> | Pink Trumpet Tree |
| <i>Ulmus parvifolia</i> | Chinese Elm |



BASIN TREES SUCH AS:

- | | |
|--------------------------|---------------------|
| Botanical Name | Common Name |
| <i>Platanus racemosa</i> | California Sycamore |

ENTRY & ACCENT such as:



Bougainvillea spp.



New Zealand Flax
Phormium tenax



Fox Tail Agave
Agave attenuata



Blue Chalksticks
Senecio mandraliscae



ENTRY AND ACCENT PLANTING SUCH AS:

- | | |
|-------------------------------|-------------------------------|
| Botanical Name | Common Name |
| <i>Agave attenuata</i> | Agave |
| <i>Agave americana</i> | Century Plant |
| <i>Aloe striata</i> | Coral Aloe |
| <i>Bougainvillea</i> spp. | Bougainvillea |
| <i>Carex pansa</i> | Dune Sedge |
| <i>Chamaerops humilis</i> | Mediterranean Fan Palm |
| <i>Cistus x purpureus</i> | Rock Rose |
| <i>Ceanothus</i> spp. | California Lilac |
| <i>Dasyliroon wheeleri</i> | Desert Spoon |
| <i>Deschampsia cespitosa</i> | Tufted Hair Grass |
| <i>Dietes bicolor</i> | Fortnight Lily |
| <i>Leptospermum scoparium</i> | New Zealand Tea Tree |
| <i>Muhlenbergia rigens</i> | Deer Grass |
| <i>Phormium tenax</i> | New Zealand Flax |
| <i>Rosmarinus officinalis</i> | Trailing And Upright Rosemary |
| <i>Raphiolepis indica</i> | Indian Hawthorn |
| <i>Senecio mandraliscae</i> | Blue Chalk Sticks |



TURF

- Common Name
GN-1 hybrid Bermuda
Overseed with 'Turf Star' Rye @ 5lbs./1000 sf

PERIMETER PLANTING such as:



Dwarf Coyote Bush
Baccharis pilularis 'Pigeon Point'



California Coffeeberry
Rhamnus californica 'Eve Case'



Toyon
Heteromeles arbutifolia



Red Yucca
Hesperaloe parviflora



PERIMETER PLANTING SUCH AS:

- | | |
|--|------------------------------------|
| Botanical Name | Common Name |
| <i>Abutilon palmeri</i> | Indian Mallow |
| <i>Agave shawii</i> | Coastal Agave |
| <i>Arctostaphylos densiflora</i> 'Howard McMinn' | Manzanita |
| <i>Baccharis pilularis</i> 'Pigeon Point' | Dwarf Coyote Brush |
| <i>Dendromecon harfordii</i> | Island Bush Poppy |
| <i>Gambelia speciosa</i> 'Firecracker' | Firecracker Island Bush Snapdragon |
| <i>Heteromeles arbutifolia</i> | Toyon |
| <i>Hesperaloe parviflora</i> | Red Yucca |
| <i>Muhlenbergia rigens</i> | Deer Grass |
| <i>Rhamnus californica</i> 'Eve Case' | California Coffeeberry |
| <i>Rhus integrifolia</i> | Lemonade Berry |
| <i>Salvia L.</i> 'Point Sal's Spreader' | Prostrate Purple Sage |
| <i>Yucca whipplei</i> | Our Lord's Candle |

BASIN PLANTING such as:



California Gray Rush
Juncus patens



California Field Sedge
Carex praegracilis



San Diego Marsh Elder
Iva hayesiana



Seaside Daisy
Erigeron glaucus

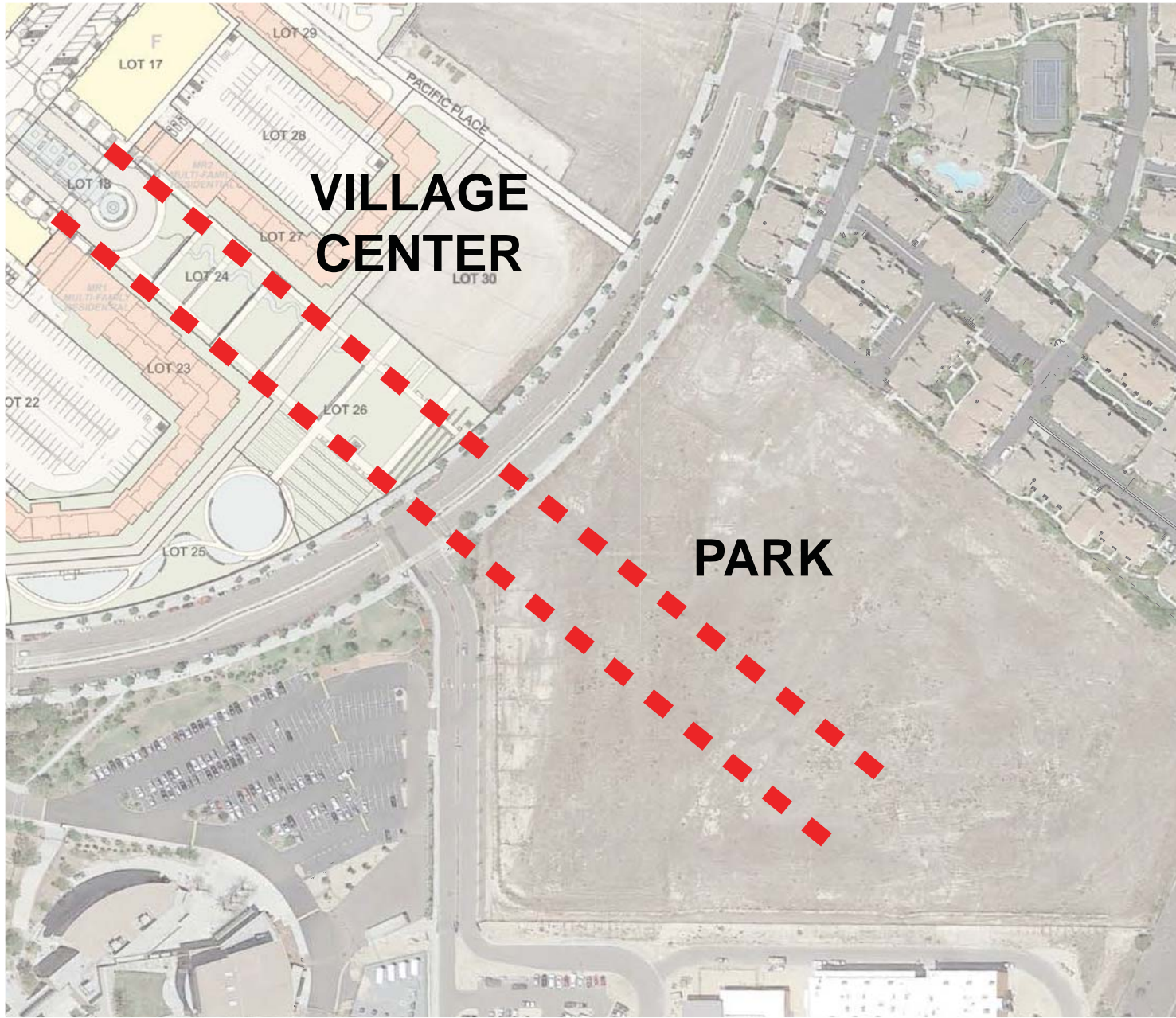


TREATMENT BASIN PLANTING SUCH AS:

- | | |
|---------------------------------|-----------------------|
| Botanical Name | Common Name |
| <i>Carex</i> spp. | Sedge |
| <i>Erigeron glaucus</i> | Seaside Daisy |
| <i>Eschscholzia californica</i> | California Poppy |
| <i>Iva hayesiana</i> | San Diego Marsh Elder |
| <i>Juncus acutus</i> | Spiny Rush |
| <i>Juncus patens</i> | California Gray Rush |
| <i>Muhlenbergia rigens</i> | Deer Grass |

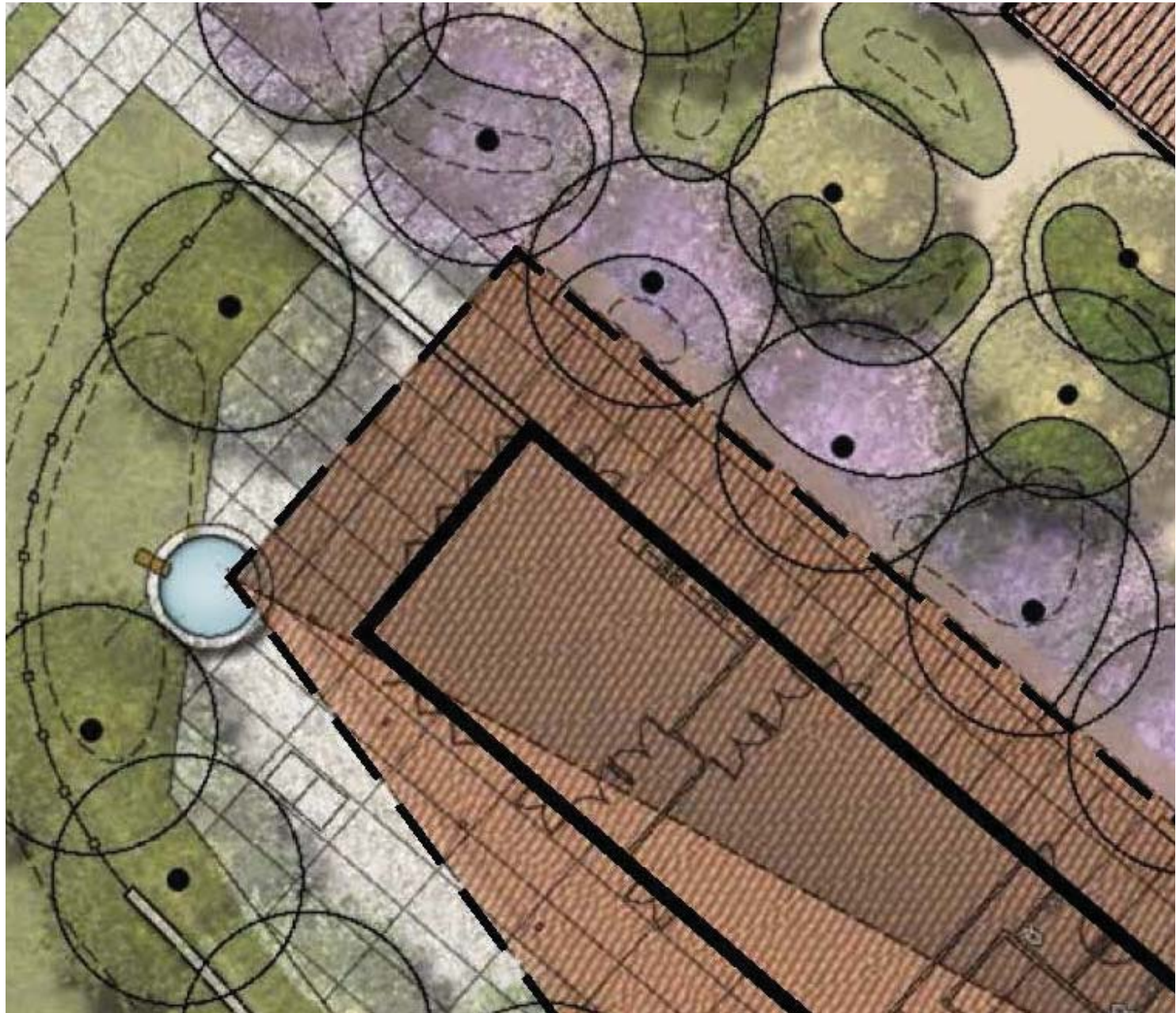
Plant Image Board
PHR COMMUNITY PARK

2016.01.14



Central promenade connection to Village Center

DESIGN INSPIRATION



Stormwater catchment feature at courtyard

STORMWATER FEATURE



Smooth stucco site walls along central promenade

PARK CHARACTER



Masonry site wall with textured finish or decorative CMU block

PARK CHARACTER



Cobble and vegetated treatment basin

TREATMENT BASIN



Prefabricated 25' x 45' steel structure with standing seam metal roof and tongue and groove wood finish below. Rain chain to connect to basin.

SIGNATURE SHADE STRUCTURE



Prefabricated 25' x 60' steel structure with standing seam metal roof and tongue and groove wood finish below. Rain chain to connect to stormwater feature.

SIGNATURE SHADE STRUCTURE



Prefabricated 20' x 40' steel structure with standing seam metal roof and tongue and groove wood finish below

PROMENADE SHADE STRUCTURE



Outdoor parkour fitness equipment

PARKOUR



Concrete skate plaza

SKATE PLAZA



Basketball with "Goose Neck" basketball set by P.D. Play. Surfacing colors to be terracotta and beige.

BASKETBALL



Rustic style fitness equipment

FITNESS NODES



Pump track with concrete surfacing

PUMP TRACK



Decomposed granite surfacing with trees and benches

DOG PARK

Image Board 1 PHR COMMUNITY PARK

2016.01.14



Powercoated metal bike rack by Reliance Foundry, color black

BIKE RACK



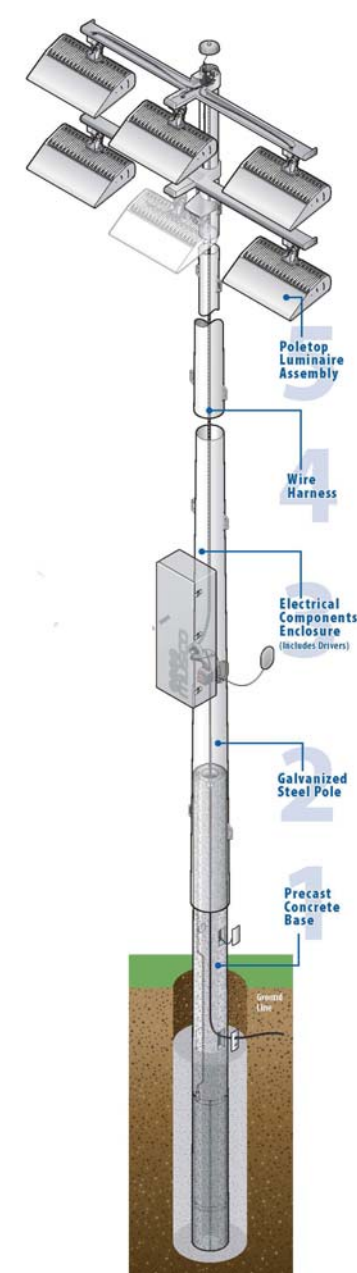
High-low drinking fountain with doggie bowl by Haws. Color: Black

DRINKING FOUNTAIN



Pedestrian pole down light, color to be black.

PEDESTRIAN LIGHTING



LED sports field lighting

SPORT FIELD LIGHTING



High performance, full cutoff LED

SPORT COURT LIGHTING



Curvilinear pathways through play garden area

PLAY GARDEN



Freestanding play elements in play garden

PLAY GARDEN



Freestanding play elements in play garden

PLAY GARDEN



Rope climbing structure

CHILDREN'S PLAY



Boulder climbing element

CHILDREN'S PLAY



Arc swings by Landscape Structures, Inc.

SWINGS



Double grill with built-in hot coal container by Outdoor Creations

BARBECUE AND HOT COAL CONTAINER



Natural grey concrete with medium broom finish

PEDESTRIAN PAVING



Integral color concrete, Davis color 'Harvest Gold'

ACCENT PAVING



Decomposed granite, 'California Gold' with steel edging

STABILIZED DECOMPOSED GRANITE

Image Board 2
PHR COMMUNITY PARK

2016.01.14